

kitsch-bent > el_dmg

ver. 1

3/25/2012
kitsch-bent.com

before we begin...

tips

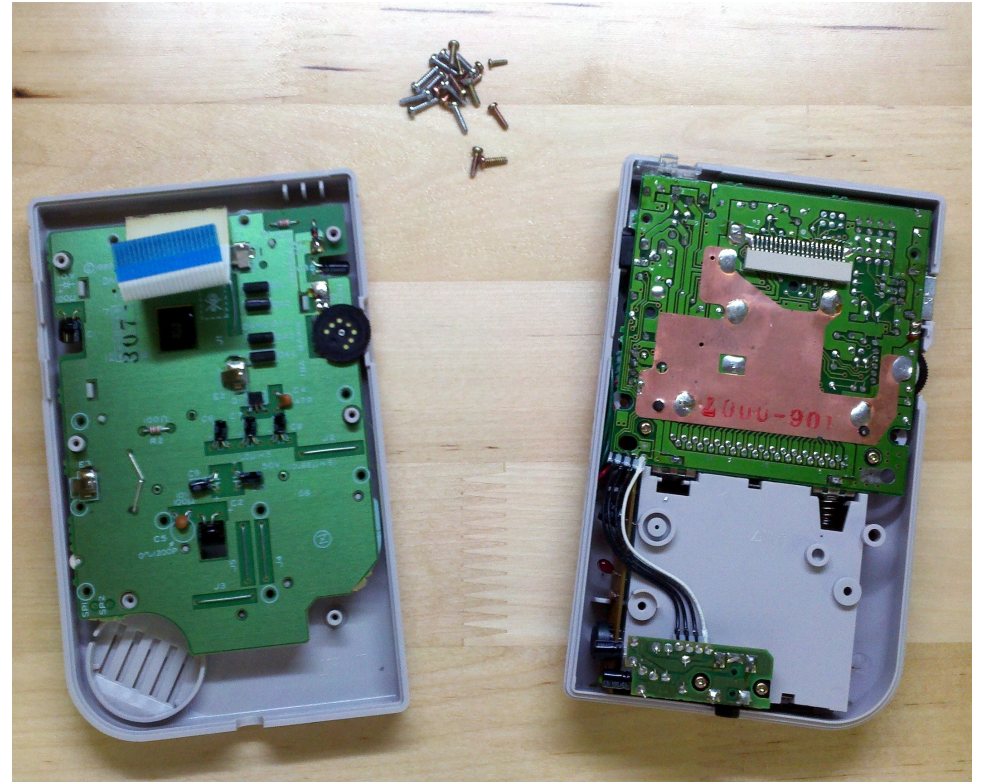
- steps 1-6 may be completed before your kit arrives in the mail. this lets you install the kit much quicker when it arrives
- be patient! rushing through this tutorial will only result in careless mistakes.
- be confident!
- be willing to ask for help! you may of course e-mail us at kitsch-bent for direct help, but also remember there are several online communities where you can generally find very supportive and wonderful people. these include: chipmusic.org

supplies

- tri-wing and phillips screwdrivers. note: some cases are not held together with tri-wing screws. please check your case. the majority use this type of screw, however
- tweezers (optional, see step three)
- small wire cutters (these will cut plastic as well (step six))
- el_dmg kit
- soldering iron and solder
- a DMG-01 model gameboy (the 'classic')
- razor blade (see step four)

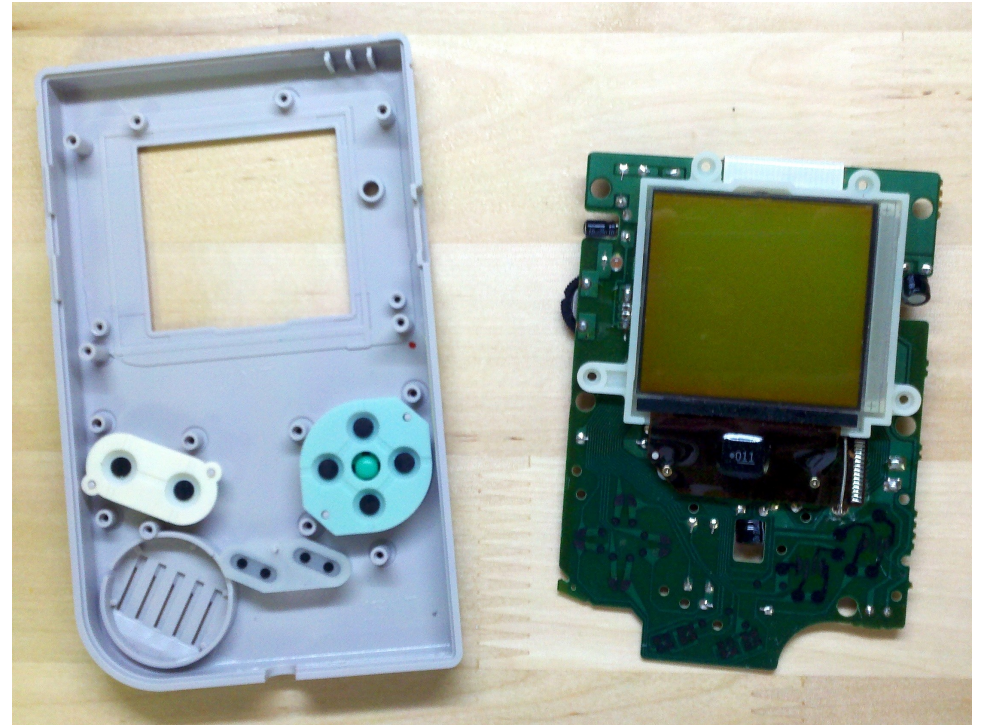
step one

- take all six screws out which hold the case together, and separate the two halves of the case
- the ribbon cable will come out with a gentle pull downwards
- set the screws and the bottom half of the case aside. don't lose the screws.



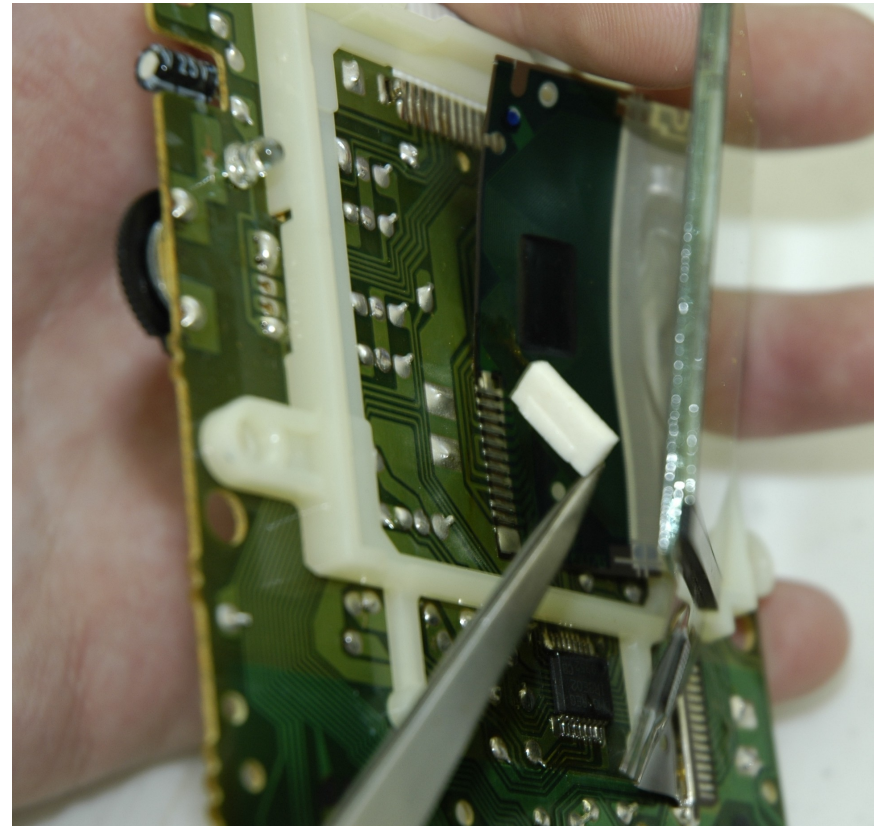
step two

- take the circuit board off the front half of the case. set these screws and the front half of the case aside and do not lose them
- you may find there is an adhesive tape holding the LCD screen to the case. if it is stuck, you can take the plastic screen protector off the case and push the LCD screen out this way



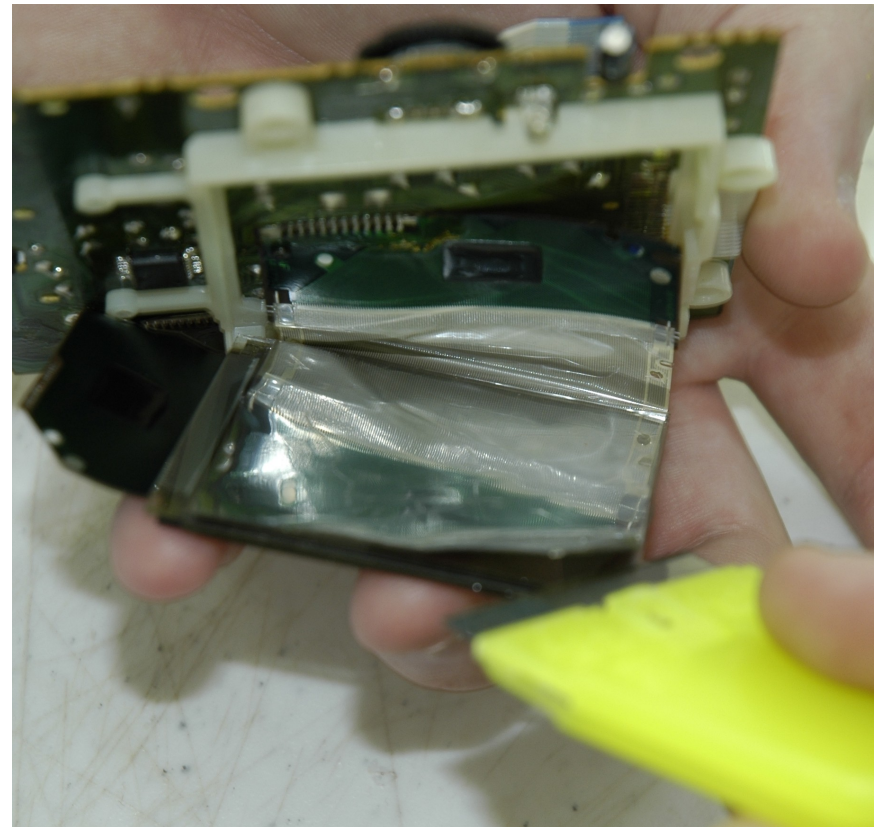
step three

- take out the two screws holding the brown LCD ribbon cable down
- lift up the LCD screen, and remove the two white foam pieces from behind the screen
- **SAVE THE FOAM PIECES!** you will use these later.



step four

- using a razor blade (or other similar object) gently lift the edge of the polarization film from the back of the LCD's glass, and peel this off completely. discard this film when done, as you will replace it with the polarization film in your kit
- BE CAREFUL not to cut yourself, and please remove this film with care. this is the most difficult part of the modification, so take your time and be patient
- after you remove the film, use rubbing alcohol and a cloth to remove any remaining adhesive



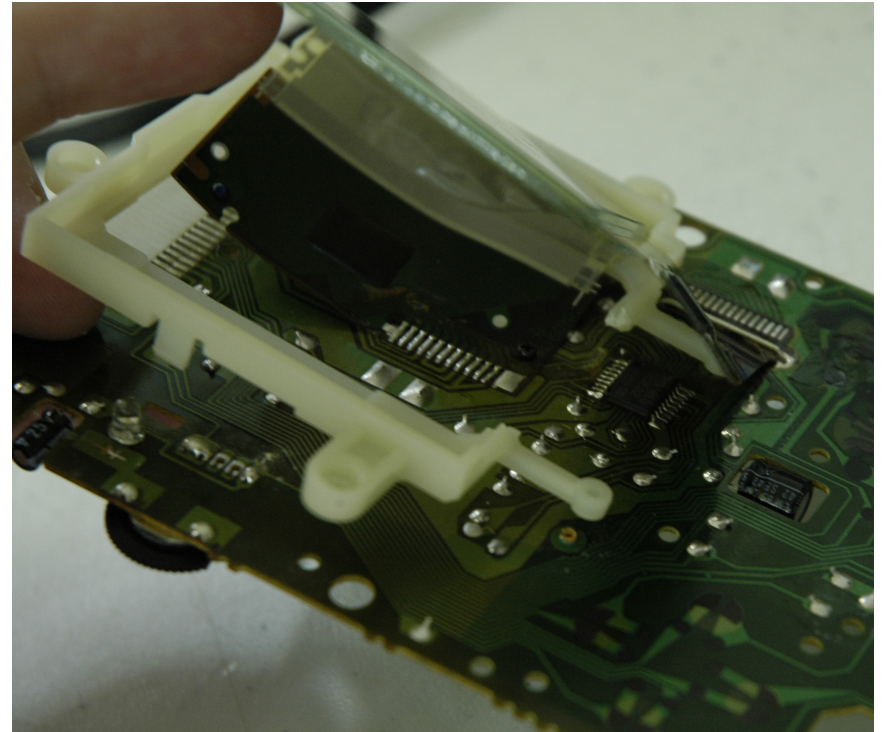
step five

- loosen the white plastic guard around the LCD screen, and lift it up from the circuit board. a section of this will be cut in the next step



step six

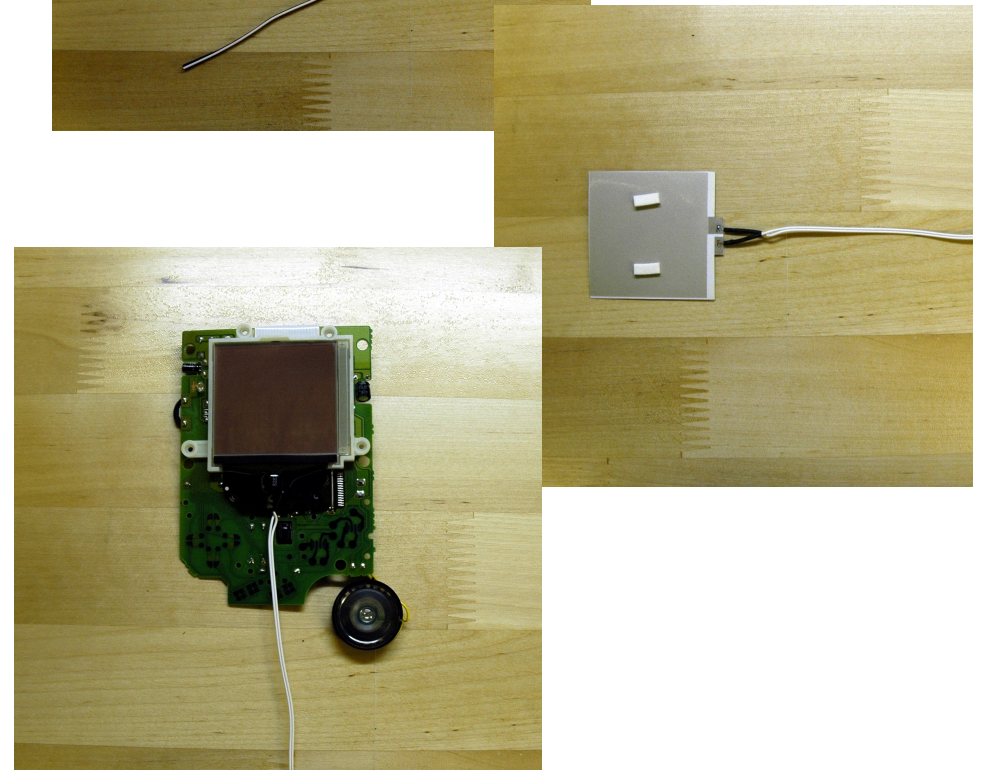
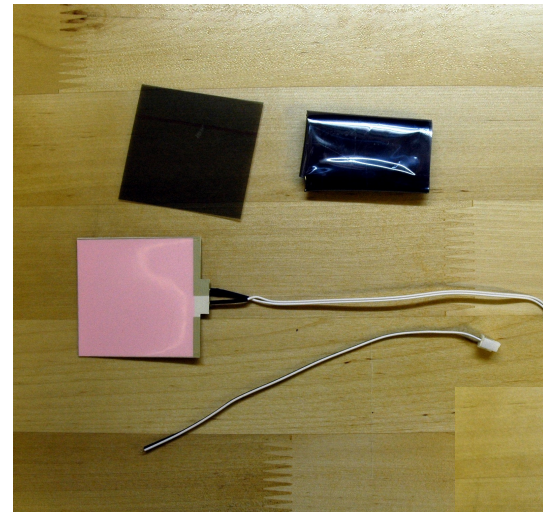
- with your wire cutters, cut the section of thinner plastic along the bottom of this white plastic square, which is between the two plastic legs sticking out at the bottom
- this is illustrated in the photograph. please compare with the photograph from the previous step to understand which part of plastic is removed
- this area of plastic is thin, and easy to cut
- this is the only modification required to this plastic LCD frame
- after this is cut, snap the plastic frame back into place on the circuit board



step seven

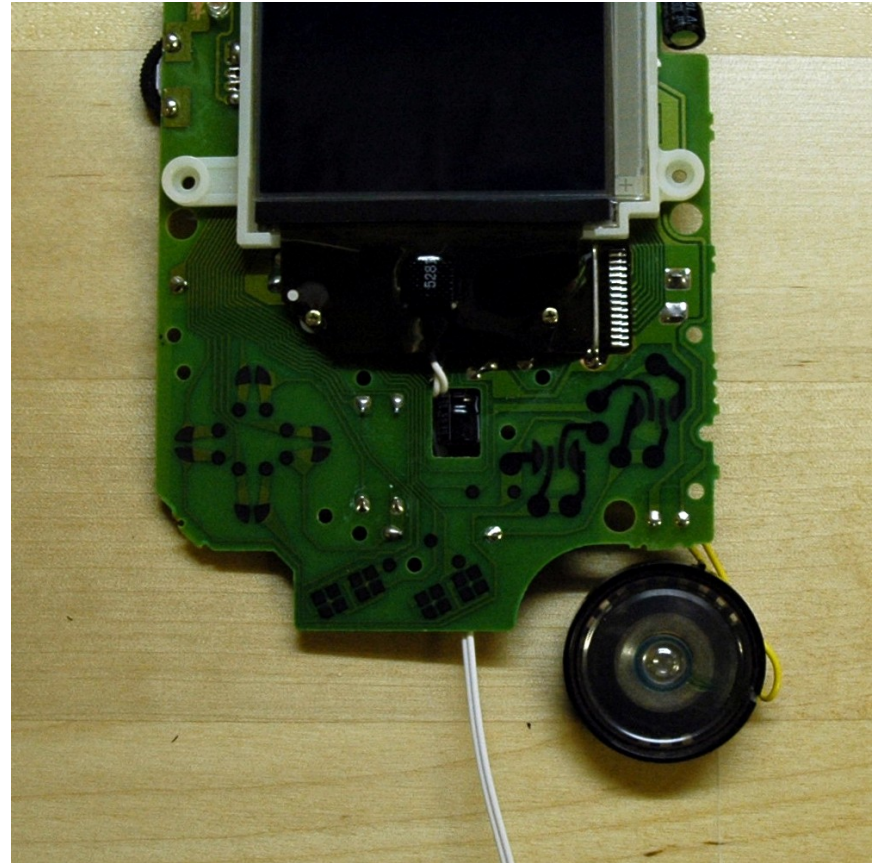
- remove the contents of the package
- put the two foam pieces you saved earlier on the backside of the EL panel. the back is the grey side.***
- place the EL panel underneath the LCD screen. make sure the LCD screen is clean and free from fingerprints and dust/debris before this. the pink side of the EL panel goes up, towards your face.
- the EL panel has a thin plastic film covering it which needs to be removed prior to installation. it peels off the pink side easily.
- on top of the backlight place the polarization film. It has plastic film on both sides which needs to be removed prior to installation.
- this is where you choose the polarization effect of your backlight (normal or inverted). simply rotate the polarization film 90 degrees to change the screen effect. if the LCD screen looks dark blue, you have it placed for inverted polarization.

*** this is optional. when you install your backlight if you notice there are pressure points, simply remove the foam pieces again.



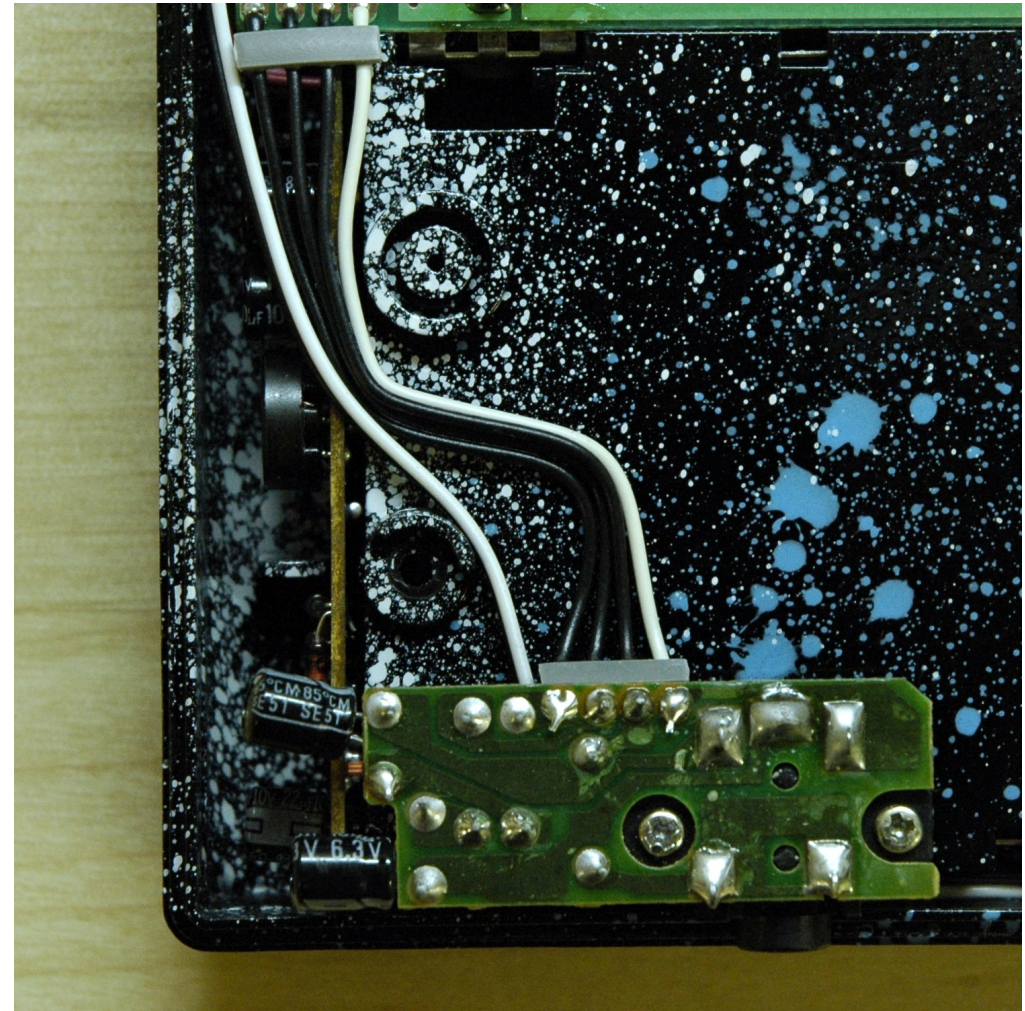
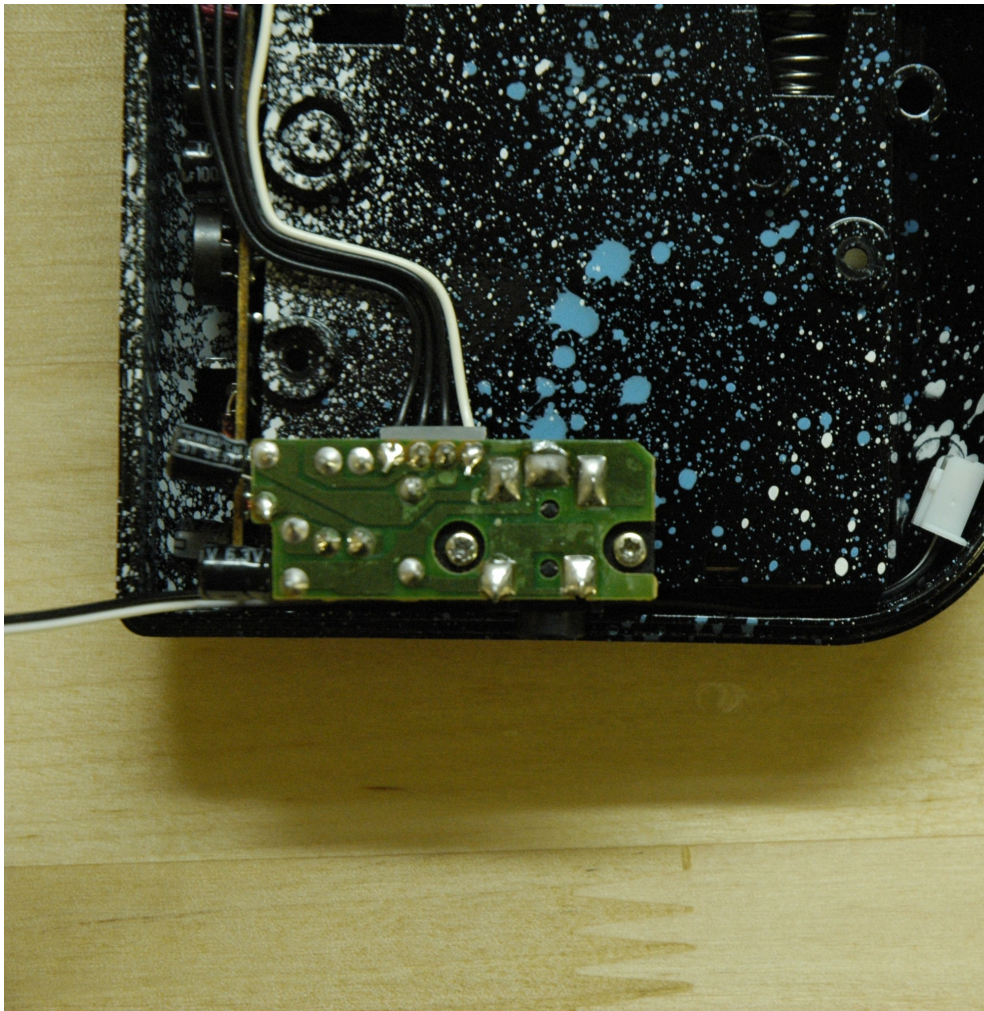
step eight

- screw the ribbon cable for the LCD back into place.
- pull the backlight wires through the hole where “C2” is located.



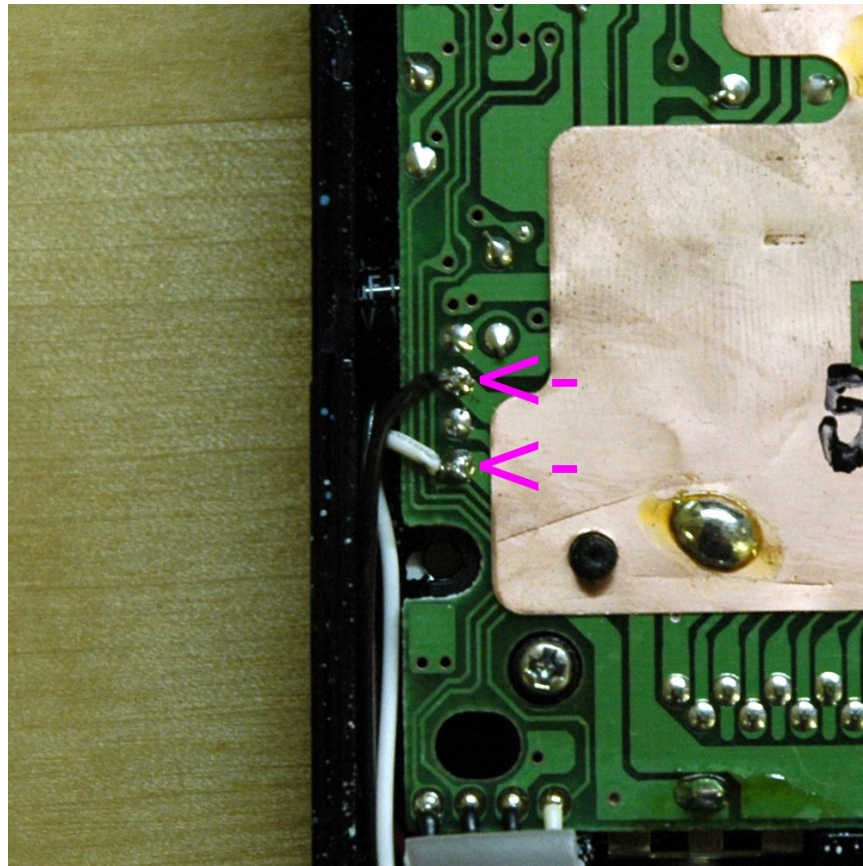
step nine

- position the other included hook-up wire where it goes underneath the headphone jack, and follows the wires from the headphone PCB up to the main PCB. this is shown in the photos.



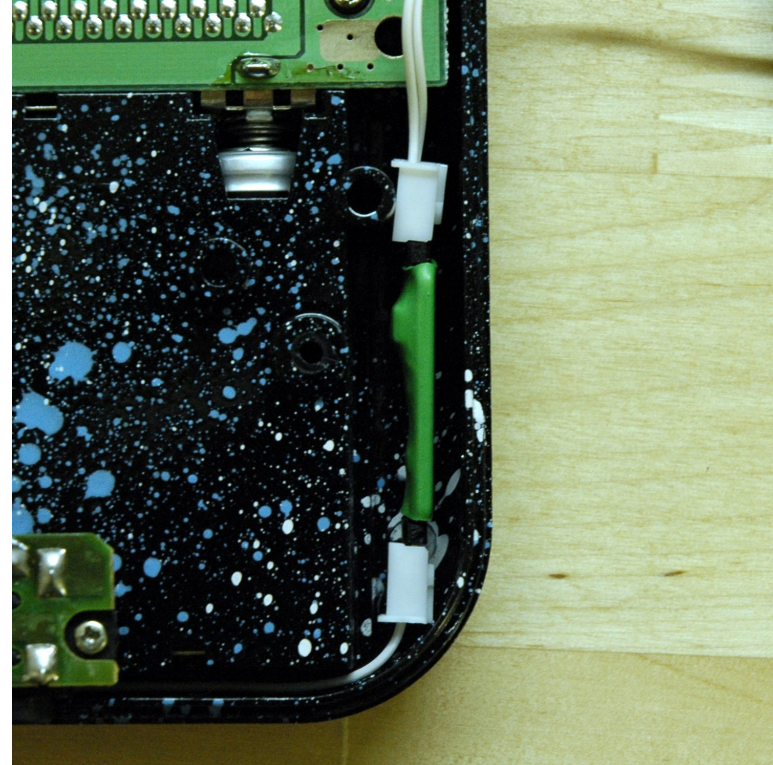
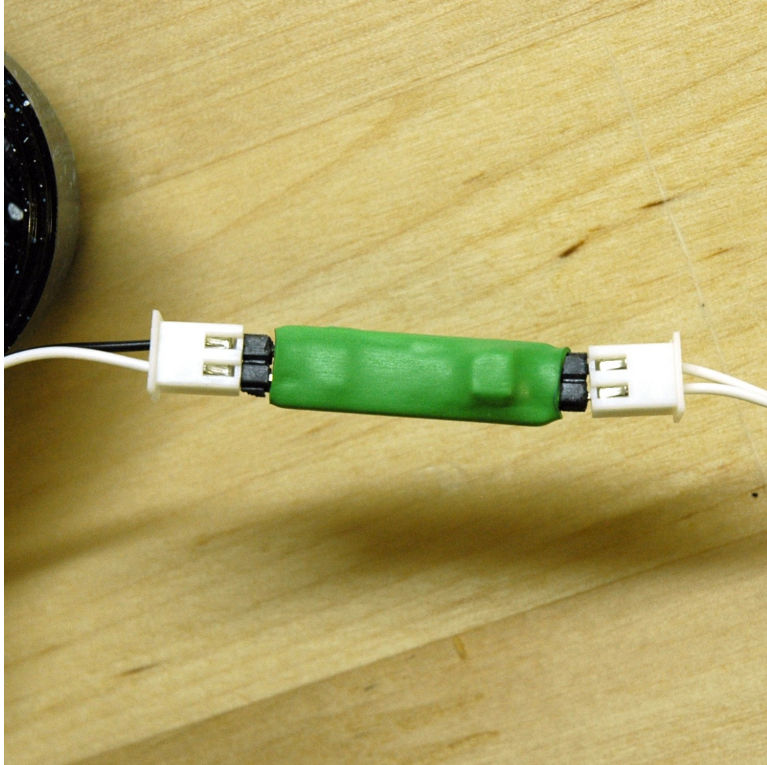
step ten

- solder the ends of this wire to the power supply solder points as seen in the photo.



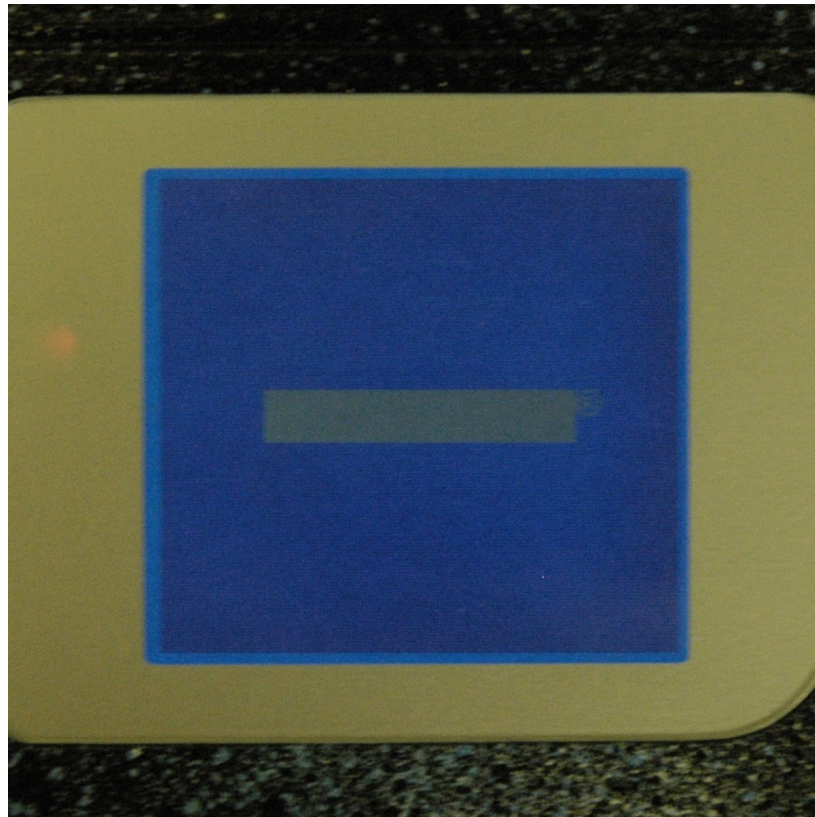
step eleven

- in this step you will plug everything together.
- on the circuit board there are two 2x1 headers. on one of these headers, there is a leg which is shorter than all the others. plug this in so the BLACK wires goes to the shorter leg on this header. the white wire connects to the other leg on this header, obviously.
- the EL panel plugs into the other end of the circuit. it doesn't matter which way you plug it in.
- next, simply place the circuit board into the open space next to the battery compartment, and screw the gameboy back together! you're done ;)
- when you screw it back together, make sure the wire isn't causing the case to bulge or doesn't get cut by a screw being driven through it.



step twelve

- make sure that you reconnect the ribbon cable that connects the two circuit boards together inside
- turn it on and assure the backlight is straight and seated to your satisfaction.



congratulations!

you are finished :)

we hope you enjoy your el_dmg!

if you have any questions, please do not hesitate to contact us.

kitsch-bent.com